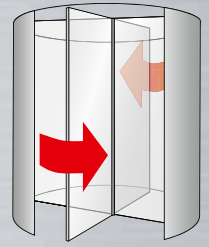


Automatic 2-Wing Revolving Doors



Everything Revolves Around What You Want

Revolving doors are modern and environmentally friendly. They are permanently open to your customers and business partners but at the same time they always closed and therefore minimise the loss of cooling or heating energy. The TORMAX revolving door forms an overall system with a revolving door and an integrated sliding door which you can activate and monitor together. The doors can be installed with special functions and configured to meet your exact wishes and requirements. Every type of finish is possible – anodised, powder-coated, stainless steel, all in various qualities, colours and surface structures etc.

TORMAX 2-Wing Revolving Doors Have Everything Going for Them

- Impermeable: dirt, noise and draft-proof
- Environmentally friendly: door is always closed
- Generously proportioned door segments: easy to use, even with luggage, shopping trolley or wheel chair
- Integral automatic sliding door: ideal for fine weather operation, heavy pedestrian traffic or moving goods etc.
- Complete with revolving display cabinets: for eye-catching promotion or decoration
- Ceiling lighting: rotates with door, separately controlled
- Night security: for securely locked doors with an illuminated display cabinet in the foreground
- Safety: handicapped persons can use a special control button to reduce the speed of rotation; an emergency stop button immediately halts revolving and sliding door
- Service software: the TORMAX «hand-held programmer» significantly reduces installation and service time thanks to simple configuration and malfunction diagnosis

Drive & control system



- Power transmission: a silent belt drive
- Motor: a brushless and maintenance-free low voltage AC motor with integral encoder, brake and low rotation speed
- Emergency operation: door is easily opened by hand in the event of power failure
- Separate sliding door user interface: various operating modes when revolving door is in open position
- Control panel: protected against unauthorised interference
- A range of different functions can be programmed for power failures and emergencies

Options

What do you want? Choose from a wide range of functions and options. Can't find what you are looking for? Ask us. Almost nothing is impossible.

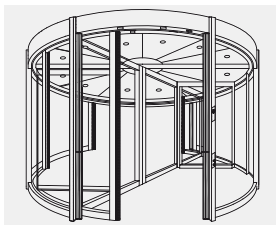
- Air curtain
- Without integral display cabinets
- Alternative types of doors in the middle of the revolving door on request
- Special canopy finishes
- Special ceiling materials and illumination
- Drum wall made from different materials e.g. aluminium sandwich construction
- Lock / brake for locking door
- Night access by a special access code or key etc.
- Manual unlocking
- UPS battery backup for power failures

Dimensions, Side and Plan View

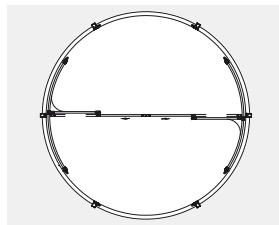
Dimensions:

Internal diameter mm	External diameter mm	Passage width mm	Capacity (persons per hour)	Passage height mm	Canopy height mm	Overall height mm
3600	3810	1660	4800	2200 – 2700	min. 300	2500 – 3000
3800	4010	1760	5100			
4000	4210	1860	5400			
4200	4410	1960	5700			
4400	4610	2060	6000			
4800	5010	2260	6300			
5400	5610	2360	6600			

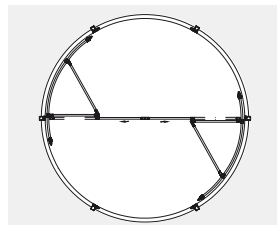
Other dimensions available on request



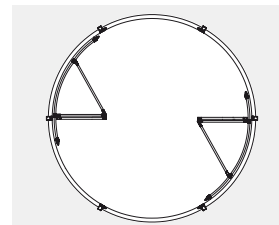
Appearance with display cabinet



Plan view without display cabinet



Plan view with display cabinet



Open- / escape position

Safety Features, Sensors and Switches

Panel and Functions



Turnstile revolving door operating modes

NIGHT: Door closes and remains closed

ROTATE: Door rotates at reduced speed; speed increases if some-one enters

AUTOMATIC: Door can be placed in the closed or open position; it only rotates if some-one enters

OUT: Door can be placed in closed or open position; it only rotates if some-one exits through the door; not if some-one tries to enter

OPEN: Door moves to open position; sliding door switches to AUTOMATIC operating mode



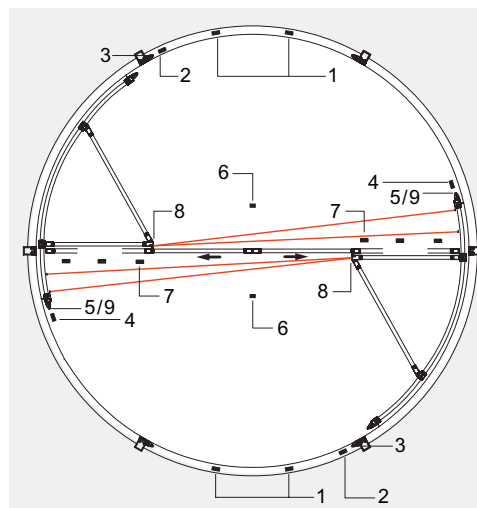
Sliding door operating modes

OFF: Door closes and remains closed

AUTOMATIC: Door is in automatic mode and opens to the full opening width

AUTO. Red: Door is in automatic mode; a reduced opening width can be selected at will

OPEN: Door can be selected to be fully or partially open



- 1 Concealed motion sensor
- 2 Pre-column safety sensor
- 3 Mullion safety edge
- 4 Pre-column safety sensor (rotor)
- 5 Mullion safety edge (rotor)
- 6 Motion sensor (sliding door)
- 7 Presence safety sensor
- 8 Safety beam
- 9 Foot safety scanner

Your Partner for Every and Any Automatic Door System



Consultation and service included

Ask for further documents on the individual systems or simply ask your TORMAX partner. He will be glad to offer you help in conceiving door systems, the selection of materials, the calculation of cross sections, professional assembly – in brief: he offers all services prior to,

during and after the purchase. If necessary, service professionals are at your disposal on the spot wherever you are in the world.

You find your TORMAX partner at: www.tormax.com