

# Urban strategies

Simpler town planning with automation

# Managing and improving urban areas

Cities today have to face a series of issues and demands that can be addressed through intelligent, automated urban planning. Councils and professionals working in the public sector must find solutions to their cities new needs:

- **improving urban road systems**
- **promoting people and building safety**
- **safeguarding the environment and citizens' health**



# Automation gives your town a hand...

- technological solutions to organise and simplifying the town's road systems
- electronic systems and management software to control authorised access
- solutions to improve living standards and comfort while preventing pollution
- systems to restrict access and to protect citizens
- free or pay-to-park facilities
- automated indoor and outdoor access
- dispensing units to provide safe access to utilities (power, water, gas and telephone service)

4

5

6

7

8

9

10





# Organising and simplifying the town's road system



pedestrian areas



restricted traffic areas



reserved lanes

preferred public-transport lanes



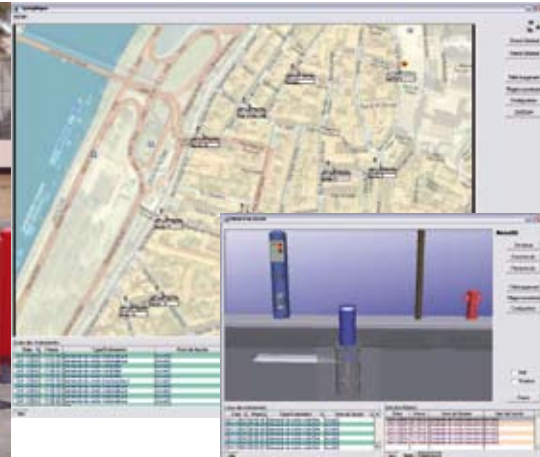
# Control authorised users' access



controlled vehicle access



controlled and protected access



town management software

Organising a town today means relying on advanced, computerised solutions aimed at coping with urban traffic. Retractable bollards or automatic bollards provide control to restricted access areas, even during different time slots: restricted traffic areas, loading/unloading areas for businesses, management of preferred public-transport lanes, restriction of historical centres and pedestrian areas. The automatic systems can regulate traffic restrictions even during special days or periods, whether it is for open air markets, special events and holidays or they can limit vehicle traffic and provide protection against exhaust fumes. Entrances to buildings or public building parking lots, municipal buildings, gyms, museums, and schools can be managed using transmitters, proximity cards or magnetic coils.

# Improving living standards and comfort



blocking off vehicle traffic



urban decor



green area decor

limit access to historical centres





# Demarcating areas to protect citizens



protecting green areas



paths and routes



protecting pavements

Citizens want to feel protected and safeguarded in many ways. A tidy, clean and automated town is well loved and appreciated by tourists who will pass their satisfaction on by word of mouth. Posts, fixed or removable bollards, benches or waste baskets are products that need to be integrated with surrounding buildings and the environment. By choosing the right blend of technology and design you can demarcate areas in any architectural context to provide safety to strolling citizens, to create rest areas or to prevent vehicles from parking in certain areas.

# Regulate parking, manage parking facilities



automatic parking



reserve single parking spaces



pay-to-park facilities



Automatic parking systems speed up entrance and exit procedures and make managing parking facilities more convenient. They adapt perfectly to large, multi-level parking with lots of parking spaces, and small parking lots in historical centres. Automatic doors confer prestige to a building, increasing users' comfort and hygiene levels especially in office and public buildings, stations, airports, schools, and hospitals, while increasing temperature efficiency (in summer and winter) blocking any air drafts and improving acoustic insulation. Every automated access is controlled by electronic plants that can prevent access to certain areas or unauthorised persons.



# Automating access and conferring prestige



automatic doors



tripod turnstiles



safety turnstiles



chain barriers

automatic turning flower box



# Providing services in total safety



fixed power dispensers



retractable energy dispensers



power and water dispensers

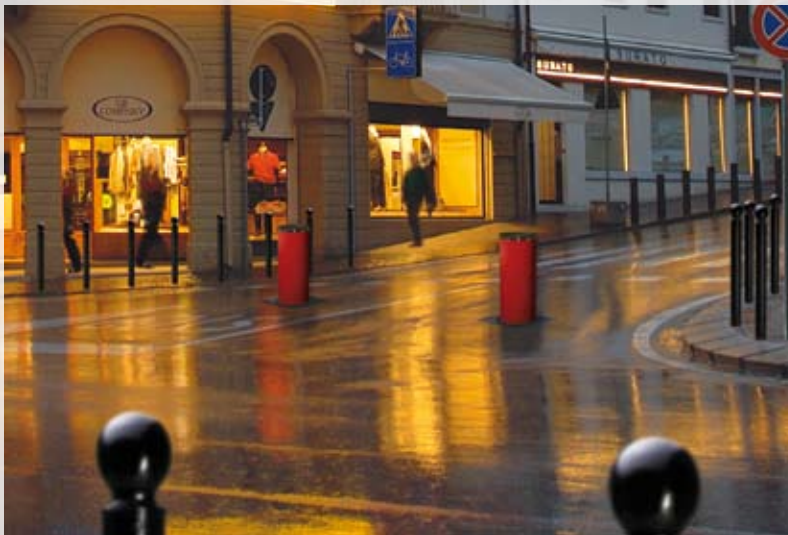
Wherever there is a temporary need for power, water or other services, the fixed and retractable dispenser units are the ideal solution in terms of totally safe water and power supply. By doing away with any cables, connections, and makeshift couplings, which are all too often dangerously left on the ground, the units ensure total safety for both workers and citizens. There are numerous applicable contexts: markets, fairs, fair grounds, expos, concert halls, camp grounds, truck stops, multi-function arenas, sports centres, leisure areas, technical service areas, laboratories, parking facilities, docks, airports, and hospitality facilities.





# Choose the best partner for your town!

The commercial and technological advantage boasted by the **Came Group** is embodied in the complete range of products all featuring top finishing and design, high levels of durability over time, ease of installation and ease of use. Our service-oriented policy is an integral part of the **Came Group**, who knows how to be the ideal partner in helping you, not only to define and plan your project, but also with analysing any environmental impact and project implementation. A technical staff with professional knowledge and rich experience provide after sale service to customers in different counties and cities.





Retractable bollards



Removable posts and bollards



Fixed posts and bollards



Access control unit



Utilities dispenser unit



Urban décor



Road barriers and paying parking systems



Chain barriers



Automatic doors



Turnstile control



Overhead and sectional garage doors



Automatic gates



[www.urbaco.com](http://www.urbaco.com)